



S O M A R K

SOMARK INNOVATIONS
CAPABILITY STATEMENT



Somark Innovations (Somark) is a global leader in laboratory animal identification and data management.

We are modernizing the laboratory environment with innovative products to streamline and accurately identify and assess test animal characteristics through the research and reporting phases.

Somark's products include the world's smallest RFID tag creating a **digital mouse**, which is the foundation of Somark's **Digitail** platform. Somark is also enhancing visual identification through our **Labstamp** product, which automates tattoos to the tail of laboratory mice.

Traditional methods of identifying laboratory animals introduces inadvertent human error and inaccurate recording, and Somark customers and partners are now achieving far higher research accuracy, validity and efficiency.



“Somark's innovations are reforming and modernizing the way animal-based laboratory research takes place.

Up to 9 out of 10 clinical trials (human) fail. One of the key factors is human error during the animal-based research phase. Our commitment is to continue to work with the industry to improve the reproducibility of pre-clinical research.”



Unique reusable injector



Labstamp Express System

OUR INNOVATIVE PRODUCTS

Based on years of research, development and testing, Somark provides a range of products and technology applications to create unique animal identities, enhancing the accuracy of record-keeping in pre-clinical trials.

Somark offers **Labstamp** and **Digitail** platform with a range of applications for integration within existing laboratory systems, or as a standalone Somark technology ecosystem.

Unique rodent identification is created through either a distinct tail tattoo (Labstamp) or a RFID tag which is easily inserted into rodents' tails just beneath the skin.

Animals with the RFID tag can be easily scanned with our RFID scanner, with accurate, real-time recording of animal characteristics. The RFID tail tags are a part of our SensaLab ecosystem, linking the laboratory animal with existing or new research data management systems.

This unique capability provides the accuracy researchers and clinicians need to verify and prove findings and potentially progress to clinical (human) trials.

To read more about Somark's products visit:
www.somarkinnovations.com.

“*Somark's platform creates connectivity between test animals and the systems that record and analyze the data, reducing human intervention and potential for error.*

This breakthrough requires fewer test animals and improves animal welfare.

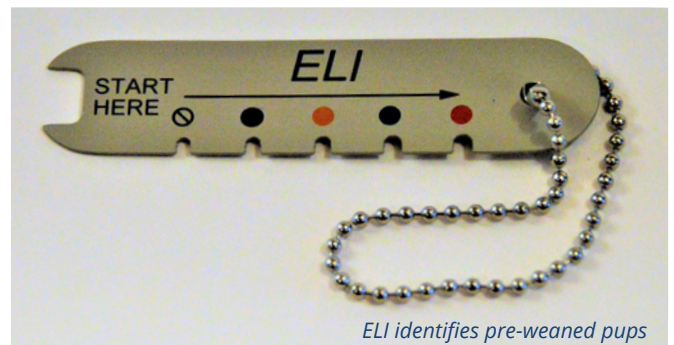
The result is better science for researchers and better business for companies supporting research advances.”

PROVEN, VALUE-ADDING TECHNOLOGY

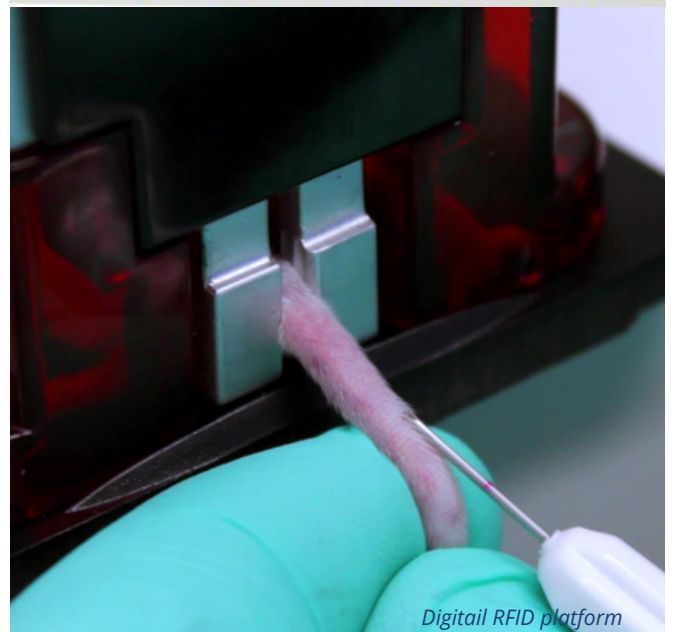
Worldwide, over 300 research organizations now use Somark's unique identification technology, enjoying increased reliability, accuracy and value; and thereby improving the quality of their research.

“*Drug development is expensive, and reliability with reproducibility is vital, as pre-clinical research is pivotal for clinical trial outcomes.*

More reliable pre-clinical research reduces the lead time of drug development and increases and brings-forward revenue opportunities.”



ELI identifies pre-weaned pups



Digitail RFID platform

RESEARCH RELIABILITY AND INTEGRITY

Our products provide enhanced test animal identification to ensure integrity and reliability of research outcomes.

With greater accuracy and certainty during pre-clinical trials, further investment in trials can progress with greater certainty.

Our digital products have increased efficiency and productivity by up to 70% time saving compared to analog methodologies.



FULLY INTEGRATED, MODULAR AND SCALABLE

Our products integrate and complement existing data management systems.

Somark components can be scaled from small, single trials through to multiple sites and trials, depending on research needs.

Somark is able to support large research trials. Your technicians can create 56,000 unique and easy-to-read Labstamp tail tattoos, and/or apply an infinite number of unique RFID tags, depending on your preferred identification method. Creating unique IDs with Somark's products substantially reduces or even eradicates the risk of duplicate and inaccurate identification and recording.

ANIMAL WELFARE

Somark's technology is far less invasive and more comfortable for laboratory animals compared to traditional ways of identifying mice, such as ear tags or other RFIDs. Leading industry practitioners describe our products as "a step change in animal welfare".

Following trials and use of our products, researchers choose Somark as they value:

- Accuracy, certainty, reliability of findings, with removal of human error
- Greater efficiency and savings
- Improved animal welfare
- Easy application and integration into existing laboratory data management systems
- Confidence in research outcomes – assisting to secure funding, publishing peer-reviewed papers, and to progress to clinical trials
- Maintaining, protecting or improving research reputation.

SOMARK INNOVATIONS CONTACT DETAILS

- 📍 6861 Nancy Ridge Drive, San Diego, CA 92121, United States
- ✉ learnmore@somarkinnovations.com
- ☎ +1 800 430 1243
- 🌐 somarkinnovations.com